



DOMINO
TECHNOLOGY



The solution designed
by **Domino Technology**
for fire detection
in false ceiling.

DOMINO TECHNOLOGY FIRE DETECTION AND EXTINGUISH SYSTEMS

**TWIN
SET**



SWISS MADE TECHNOLOGY

Detection in the room and in the false ceiling. Together.

TwinSet® simplifies the installation of the two detectors through a single wiring. The length of the rod is adjustable according to any need.



Difficulties of inspection and maintenance? Goodbye!

TwinSet® simplifies the procedures of inspection also in the most difficult situations, adapting to any context. No more panels to disassemble and trapdoors to open.

TWIN SET

The solution designed
by **Domino Technology**
for fire detection
in false ceiling.

TwinSet® is a retractable adapter that allows the recovery and the maintenance of the detector in false ceiling, avoiding the problem of opening panels.



The tool is designed to connect the **room detector** with the **false ceiling detector**. This new solution allows to wire and place the two detectors on a single rod that can be easily placed.



TwinSet® is designed to be **removable**, to facilitate the inspection and maintenance operations. The tool has got the exclusive peculiarity to solve the problem of false ceiling that cannot be inspected.



Thanks to **TwinSet®** you can **cut out** trapdoors or unaesthetic compartments.



SCAN
TO VIEW
TWINSET
VIDEO



How TwinSet® is made

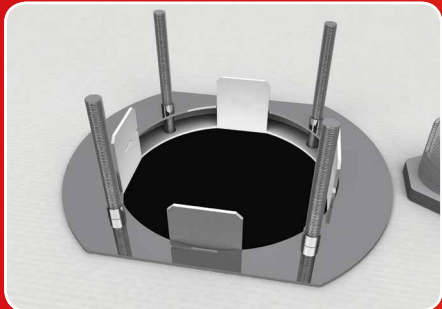
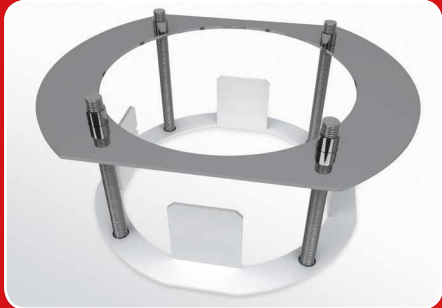


Plate and counter-plate for the adapter to the false ceiling

The items are placed in the false ceiling after making a hole of 14 cm of diameter. The screws fit with different thickness of panel.

Remote indicator

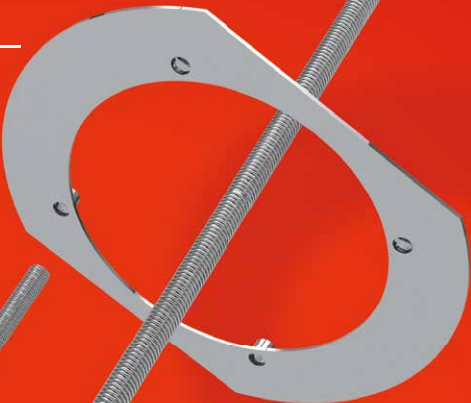
The **remote indicator**, inserted in the panel, is connected to the detector in the false ceiling for the remote transmission of the alarm.

Tool to disassemble

The cylindrical tool, placed in the four locations of the extractable support, allows and makes easier the **extraction** of the system without disassembling the room detector!

Lantern with detector in false ceiling

The lantern is the casing of the **detector** and of the terminals for wiring. It's equipped with cable clamp grips.



Room detector

The base of the **detector** is lodged in the removable support for the wiring.

Loop cables

The two detectors are wired and positioned using CEI EN 50200 **loop cables**.



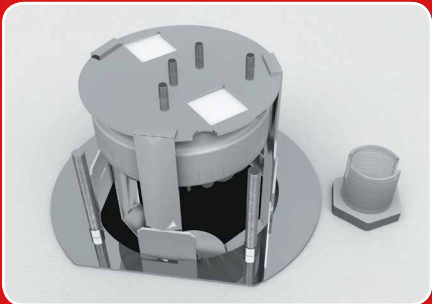
Threaded rod

It is the bar that connects the lantern to the removable support. The length can be **adjusted** according to the installation needs.



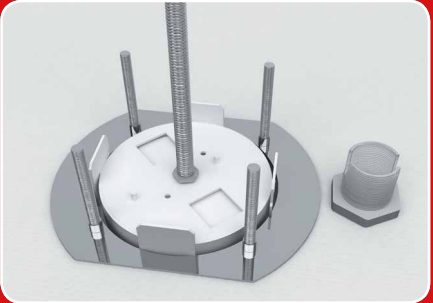
Removable support

It is the element to be connected to the lantern through the rod. It forms the lodging of the room detector. Being visible in the room, the design is studied in details and it is **customizable in color**.



Fixing

Turning clockwise, the **removable support** is attached to the counter-plate.





D O M I N O
TECHNOLOGY



ISO 9001
BUREAU VERITAS
Certification



Company with
QUALITY MANAGEMENT SYSTEM
certified in accordance with ISO 9001

Domino consulting sagl
Technology division

Via Bosia 13
Paradiso CH 6902
CHE 240 435888
Switzerland
phone + 39 348 8035782
info@dominoconsulting.ch

TWIN
SET

Domino Technology

Hi technology fire detection and extinguish systems

We are a dynamic company operating at international level in the technological and security systems design field.

Domino Technology, Tech dept of Domino Consulting Sagl, has been created with the aim of developing and completing high-tech security solution counting on seasoned professionals with thirty-year experience acquired in the fire detection and extinguishing field. Innovation, design, efficiency and reliability are all along the keywords that identify Domino Technology philosophy.

The continuing research of high quality solutions has permitted the introduction in the market of the latest Domino Technology product: an integrated system for the detection and extinguishment of fires, specifically designed for terrestrial and nautical vehicles (as cars, trucks, trailers, buses, rv's, all types of work machines, boats, storage containers, power generators and more) in order to protect the different areas of the vehicles as well as the people inside them. The Automotive SAS CU System, represent the state-of-art in all types of vehicle security, ensuring reliability and efficiency in fire detection and extinguishing reducing in the meantime maintenance costs.

www.dominioconsulting.ch